

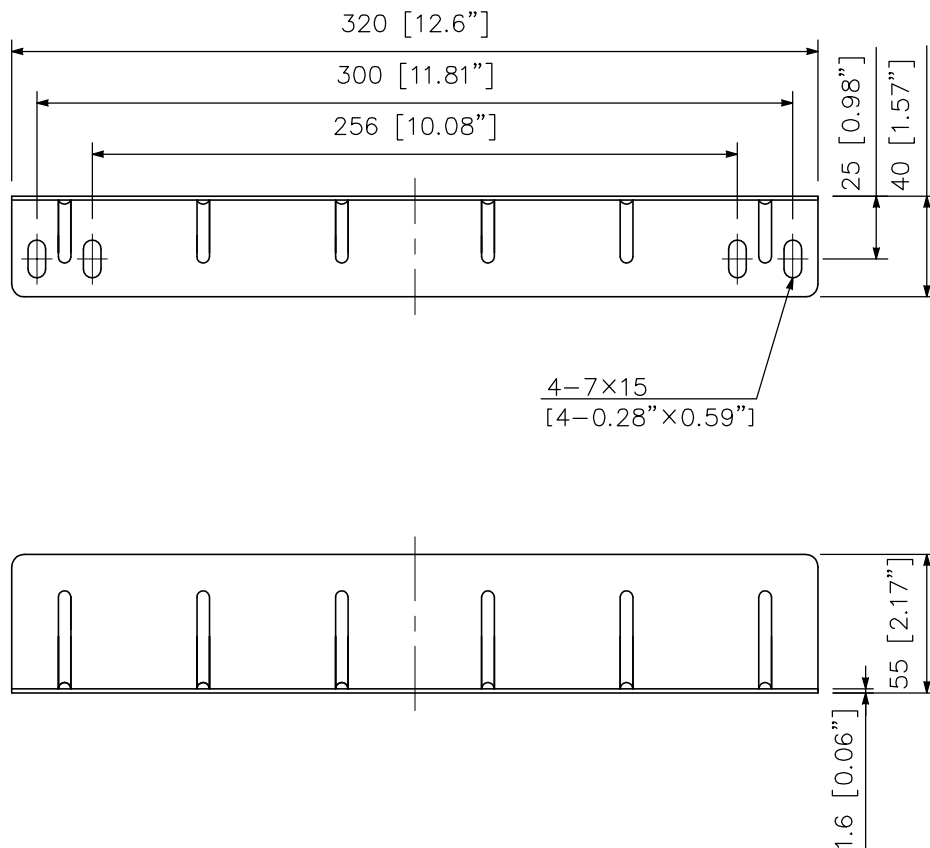
■ DESCRIPTION

Used to support heavy rack equipment, the YA-706 is supplied in pairs.

■ SPECIFICATIONS

Finish	Surface-treated steel plate
Weight	720 g (1.59 lb.) (2 pieces)
Applicable Racks	CR-273, CR-413, and CR-413-6
Accessory	Rack mounting screw *1 set

■ APPEARANCE



UNIT:mm SCALE:1/3