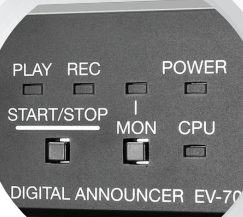




# EV-700

## Digital Announcer



# Optimize your PA system with versatile control

Adding the TOA EV-700 Digital Announcer to your existing PA system provides numerous benefits for large facilities ranging from retail stores and shopping malls to schools, factories and railway lines. The EV-700 permits easy manual distribution or automatic activation by external device of timed and repeat announcements, BGM and other audio programs with excellent sound quality. Creation and editing of various sound source files and programs, updating of settings and activation of announcements can be handled easily by direct input or managed remotely via a network. And prerecorded emergency messages are ready for broadcast the moment they are needed.



## ➤ Superior sound quality

Sound source files containing announcements, BGM, chimes and other content are recorded on a memory card, eliminating concerns about deterioration in sound quality with repeated playback.

- Recording in high-quality WAV format (44.1 kHz/32 kHz, 16 bit)
- Supplied a memory card (1 GB)\*
- Automatic gain control (AGC) function for adjusting the playback volume to a reference level

\* Extra memory card slot provided for mounting of second card for recovery or backup.

## ➤ Flexible sound source customization

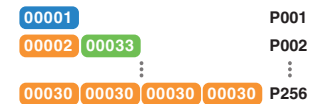
Users can create or edit/update sound source files by directly inputting new phrases or combining prerecorded phrases to create audio programs that meet their particular PA needs.

- Creation/editing/storage on a memory card (storage capacity 32,768 sound source files and 256 audio programs)
- 35 preinstalled sound source files

### 32,768 Phrases



### 256 Programs



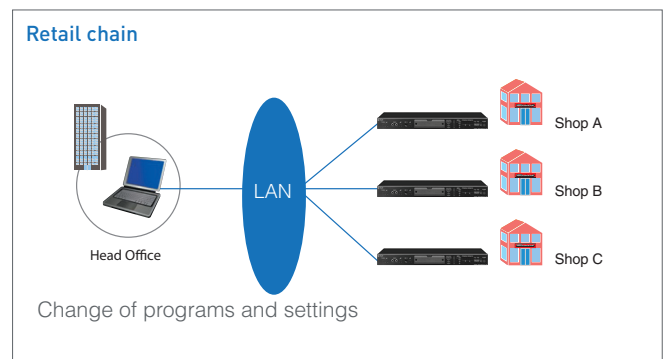
#### Notes:

1. Phrase: A single WAV sound source file
2. Program: Audio broadcast data comprising one or more phrases

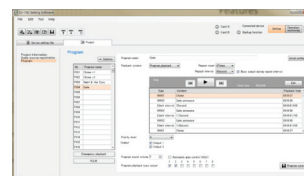
## ➤ Dedicated software enabling remote setting and operation

Installation of dedicated software enables staff in any networked location to create, edit, store and activate broadcast programs on a PC. The timing of new or edited programs and settings can be synchronized so that programs are broadcast simultaneously in every location on the network. Benefits include time and cost savings as well as greatly enhanced operating flexibility.

- On-screen GUI facilitating intuitive remote storage of sound source files and activation of broadcasts
- Full-Function Mode for management of detailed settings by equipment administrators
- Simple Mode for basic operation by novice users



### Full-Function Mode



### Simple Mode

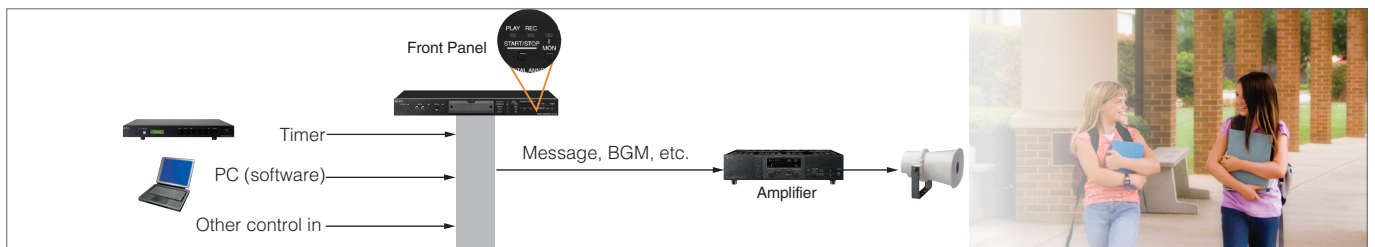
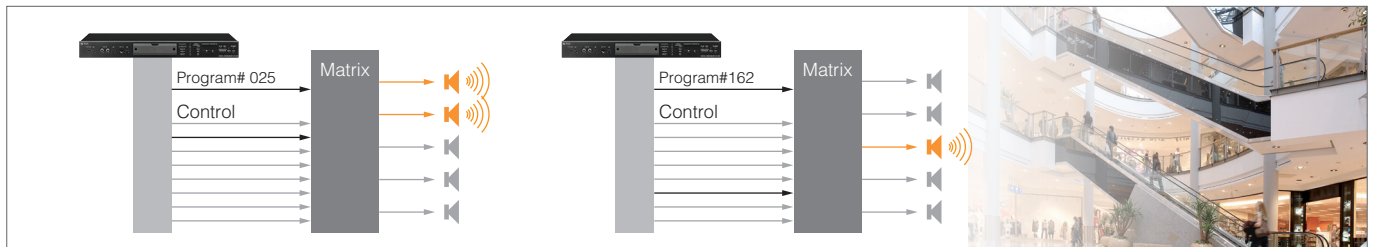


# functions and high-quality digital sound

## ➤ Interactive operation with external devices

The EV-700 can be operated in conjunction with a variety of external devices.

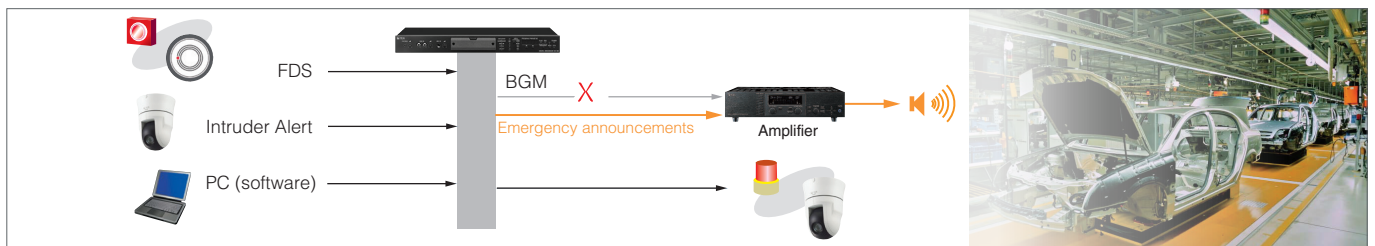
- The EV-700's operating status can be indicated with an LED in the control room.
- An indicator reminds operators during the recording or program deletion process that no broadcasting can be conducted.
- Playback of sound source files activates broadcasting patterns in a connected matrix device.



## ➤ Prompt emergency broadcasting

■ Prerecorded emergency announcements are stored for immediate broadcast when needed.

- Emergency broadcasts prioritized in emergency situations
- The broadcasting zones and number or lengths of repeat broadcasts can be set in advance.



■ R.E.M. (Recording Endless Message) function enabling operators to create/initiate repeated play back of emergency announcements quickly and evacuate with other occupants before anticipated emergencies such as tsunami





## Specifications

Power Source	Supplied from an external 24 V DC (21.6 – 26.4 V)/400 mA power supply, Removable terminal block (2 pins) or from an optional AD-246 AC adapter
Power Consumption	10 W
Wave Format	44.1 kHz/32 kHz sampling rate, 16 bits PCM, WAV file (monaural)
Sound Source Rewriting Method	LAN data transfer/Analog recording/ Direct write to memory card using the setting software
Audio Input	MIC: -55 dB*1 (microphone input volume control in maximum position), 600 Ω, unbalanced, ø6.3 phone jack (2P) LINE(rear): -20 dB*1 (line input volume control in maximum position), 10 kΩ, unbalanced, Removable terminal block (12 pins) LINE(front): -29 dB*1 (line input volume control in maximum position), 10 kΩ, unbalanced, RCA pin jack
Audio Output	LINE 1, 2: 0 dB*1, 600 Ω, unbalanced, Removable terminal block (12 pins) Headphones: 0 dB*1, 100 Ω, monaural, ø3.5 mini jack (3P)
Frequency Response	20 Hz – 20 kHz ±3 dB (1 kHz) 50 Hz – 14 kHz ±3 dB (IT-450 mounted, 1 kHz)
Distortion	0.3 % or less (1 kHz, rated output)
Storage Media	Compatible with CompactFlash™ specification Memory card
Number of Mountable Memory cards	2 (1 Memory card containing preset sound sources is supplied.) Backup operation available when 2 cards are mounted.
Number of Recordable Phrases	32768
Maximum Recording Time	About 3 hours (at 44.1 kHz sampling rate) or about 4 hours (at 32 kHz sampling rate)
Audio Output Method	Single channel monaural
Number of Playback Program	Direct mode: 16 programs Binary mode: 256 programs 1 emergency message takes precedence over the above programs and is played back. R.E.M. (Recording Endless Message) playback *2 can be performed.
Control Input	Activations 1 – 16, playback, stop, recording, erasure/clear, emergency playback, emergency recording, emergency stop No-voltage make contact input, pulse make length: 50 ms or more, open voltage: 30 V DC, short-circuit current: 10 mA, Removable terminal block (16 pins)
Control Output	Shorting outputs 1 – 8 (busy), Error: contact capacity: 30 V DC, 0.5 A, Removable terminal block (8 pins)
Network	
Network I/F	100BASE-TX
Network protocol	TCP/IP, UDP, HTTP, FTP
Connector	RJ45 connector
Operating Display	7-segment LED, 5 digits
Operating Temperature	0 °C to 40 °C (32 °F to 122 °F)
Operating Humidity	0 %RH or less (no condensation)
Finish	Panel: Aluminum, black, 30 % gloss, paint Case: Pre-coated steel plate, black, 30 % gloss
Dimensions	420 (W) x 44 (H) x 222 (D) mm (16.54" x 1.73" x 8.74")
Weight	2.4 kg (5.29 lbs.)
Accessory	Memory card (Containing prerecorded audio files) x 1, Rubber foot x 4, Removable terminal plug (2 pins) x 1, Removable terminal plug (8 pins) x 2, Removable terminal plug (16 pins) x 2, Removable terminal plug (12 pins) x 2, Front cover fixing screw x 2, CD (setting software) x 1
Option	AC adapter: AD-246, Rack mounting bracket: MB-15B

\*1 0 dB = 1 V

\*2 An emergency broadcast function that repeatedly plays the sound source recorded on the spot with the highest priority in case of an emergency situation.

### Notes

- Line output can be converted to balanced type using an optional IT-450 transformer.
- CompactFlash is a trademark of SanDisk Corporation.