



TIE CLIP MICROPHONE

EM-360 AS

1. SAFETY PRECAUTIONS

- Before installation or use, be sure to carefully read all the instructions in this section for correct and safe operation.
- Be sure to follow all the precautionary in this section, which contain important handling precautions.
- After reading, keep this manual handy for future reference.

CAUTION

Indicates potentially hazardous situations which, if mishandled, could result in moderate or minor personal injury, and/or property damage.

CAUTION

- When the unit is not use for 10 days or more, be sure to take the battery out of the unit because battery leakage may cause personal injury or contamination environment.
- Make sure to observe the following handling precaution so that a fire or personal injury does not result from leakage or explosion of the battery:
 - Do not short, disassemble, heat nor put the battery into a fire.
 - Never charge batteries of the type which are not rechargeable.
 - Do not solder a battery directly.
 - Be sure to use the specified type of battery.
 - Note correct polarity (positive and negative orientation) when inserting a battery in the unit.
 - Avoid location exposed to the direct sunlight, high temperature and high humidity when storing batteries.

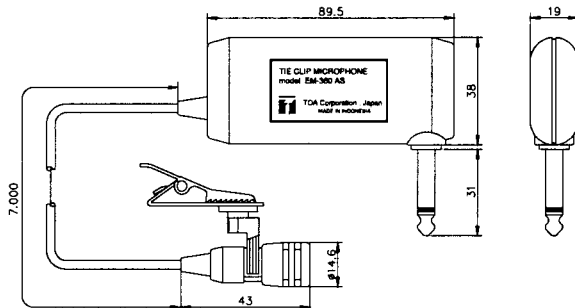
2. HANDLING PRECAUTION

- Do not expose the unit to rain or an environment where it may be splashed by water or other liquid, as doing so may result in unit failure.
- Never open nor remove the unit case to modify the unit. Refer all servicing to your nearest TOA dealer.
- Take care not to drop the unit onto the floor nor bump it against a hard object as the unit could fail.
- Do not place the unit in locations of high temperature (ex. In an unventilated car in summer) or high humidity as the unit could fail.
- Do not use the unit in locations where it is exposed to seawater.
- To clean, use a dry cloth. When the unit gets very dirty, wipe it lightly with a cloth damped in a dilute neutral cleanser, then wipe with a dry cloth. Never use benzene, thinner, or chemically-treated cleaning towel.

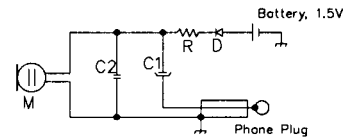
3. GENERAL DESCRIPTION

TOA EM-360 AS microphones is electret condenser type microphones that have high sensitivity make it suitable for speech application. Employs revolvable clip holder make it convenient when adjusting mic position.

4. DIMENSIONAL DIAGRAM



[Circuit Diagram]



5. OPERATING

[Battery insertion]

- Open battery cover by push and slide it.
- Insert an "AA" battery and observe polarity indication inside of battery compartment.
- Re-place battery cover by sliding it until it is lock properly.

[Using the microphone]

- Plugs the microphone into microphone input jack on amplifier. And adjust the volume control.
- Arrange mic position by revolving mic holder and keep distance of your mouth and microphone between 15 ~ 20 cm, so that best possible sound reproduction can get.
- Take care not to bring your mouth too close to the microphone, as this impairs speech clarity if you speak loudly.

6. SPECIFICATION

Type	Electret Condenser Microphone
Directivity	Unidirectional
Rated Impedance	2k ohms, unbalanced
Rated Sensitivity	-45 dB (5.6 mV)
Frequency Response	100 Hz - 16 kHz
Cable length	7 m (shield wire 1x7/0.16mm, black)
Material color	ABS Black
Mounting	Clip for Holder
Dimensions	38 X 89.5 X 19 mm (microphone body)
Weight	131 g (without connection cable)
Battery	1pc of "AA" (R6S or UM-3U)

Note : Design and specification is subject to change without notice for improvement.



TOA Corporation

533-05-020-00